

Mount Carbon Metropolitan District
8390 E Crescent Parkway, Suite 300
Greenwood Village, Colorado 80111
Office: 303.779.4525 Fax: 303.773.2050

December 27, 2018

Division of Local Government
1313 Sherman Street, Room 521
Denver, CO 80203
[Via E-File Portal](#)

Office of the Jefferson County Assessor
100 Jefferson County Parkway, Ste., 2500
Golden, CO 80419-2520
assessor@jeffco.us

Office of the Jefferson County Clerk &
Recorder
100 Jefferson County Parkway, Ste., 2560
Golden, CO 80419
clerktoboard@jeffco.us

Re: Mount Carbon Metropolitan District – Updated Map Filing

Dear Filing Administrator:

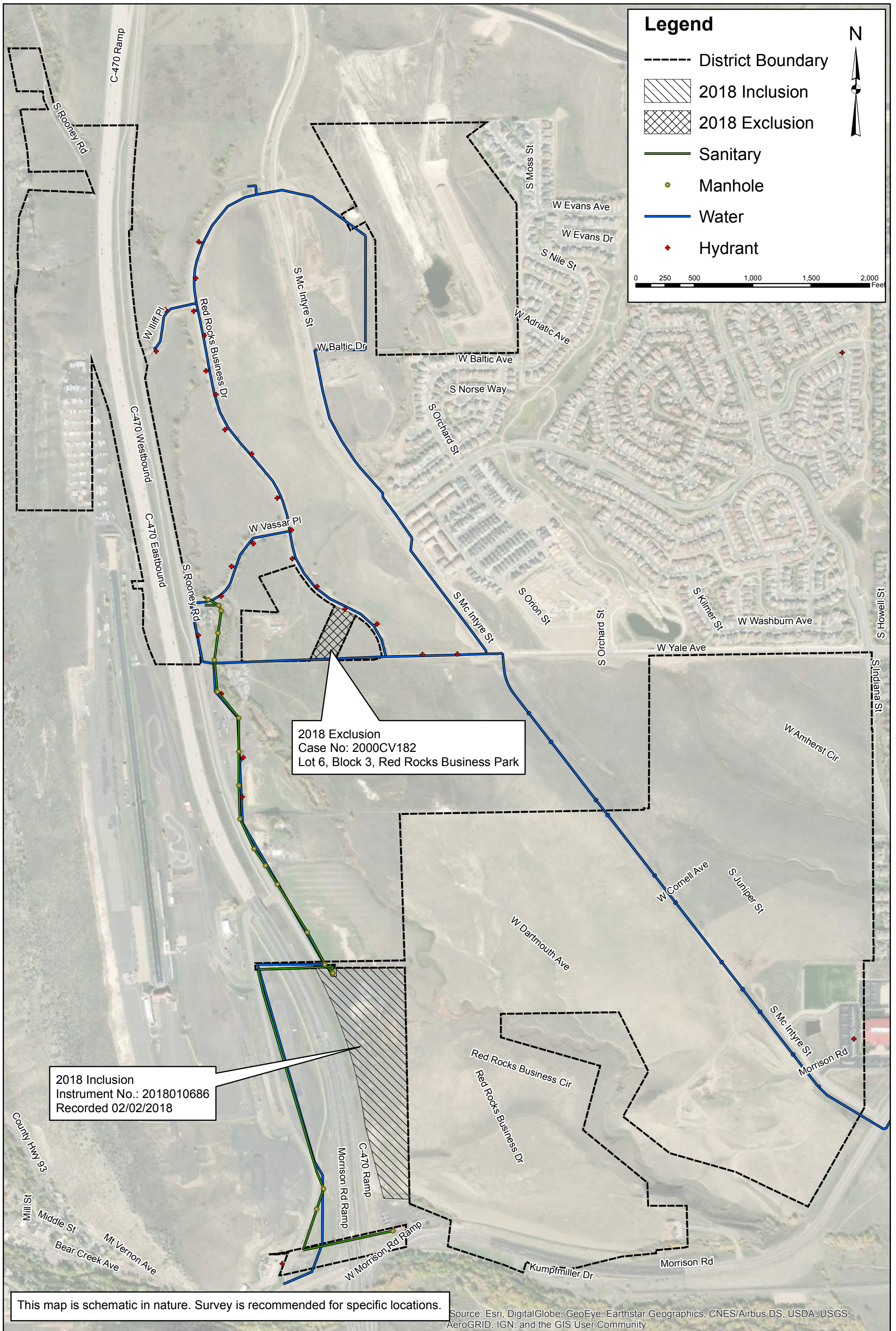
Colorado Revised Statute §32-1-306 requires special districts to provide a current, and accurate map of its boundaries to the Division of Local Government, County Assessor and Clerk and Recorder on or before January 1, of each year. In 2018 the District above has had boundary adjustments, inclusions, or exclusions. Please see the attached map for reference.

Should you have further questions or need additional information, please contact the undersigned via email or by telephone at (303) 779-4525.

Sincerely,

Jordan Honea

Jordan Honea
District Administrator
Jordan.honea@claconnect.com



Legend

- District Boundary
- ▨ 2018 Inclusion
- ▩ 2018 Exclusion
- Sanitary
- Manhole
- Water
- ◆ Hydrant

0 250 500 1,000 1,500 2,000 Feet

2018 Exclusion
 Case No: 2000CV182
 Lot 6, Block 3, Red Rocks Business Park

2018 Inclusion
 Instrument No.: 2018010686
 Recorded 02/02/2018

This map is schematic in nature. Survey is recommended for specific locations.

Source: Esri, DigitalGlobe, GeoEye, Earthstar Geographics, CNES/Airbus DS, USDA, USGS, AeroGRID, IGN, and the GIS User Community