

Mount Carbon Metropolitan District
8390 E Crescent Parkway, Suite 500
Greenwood Village, Colorado 80111
Office: 303.779.4525 Fax: 303.773.2050

December 20, 2016

Division of Local Government
1313 Sherman Street, Room 521
Denver, CO 80203
[Via E-File Portal](#)

Office of the Jefferson County Assessor
100 Jefferson County Parkway, Ste., 2500
Golden, CO 80419-2520
assessor@jeffco.us

Office of the Jefferson County Clerk &
Recorder
100 Jefferson County Parkway, Ste., 2560
Golden, CO 80419
countyclerk@jeffco.us

Re: Mount Carbon Metropolitan District – Map Filing

Dear Filing Administrator:

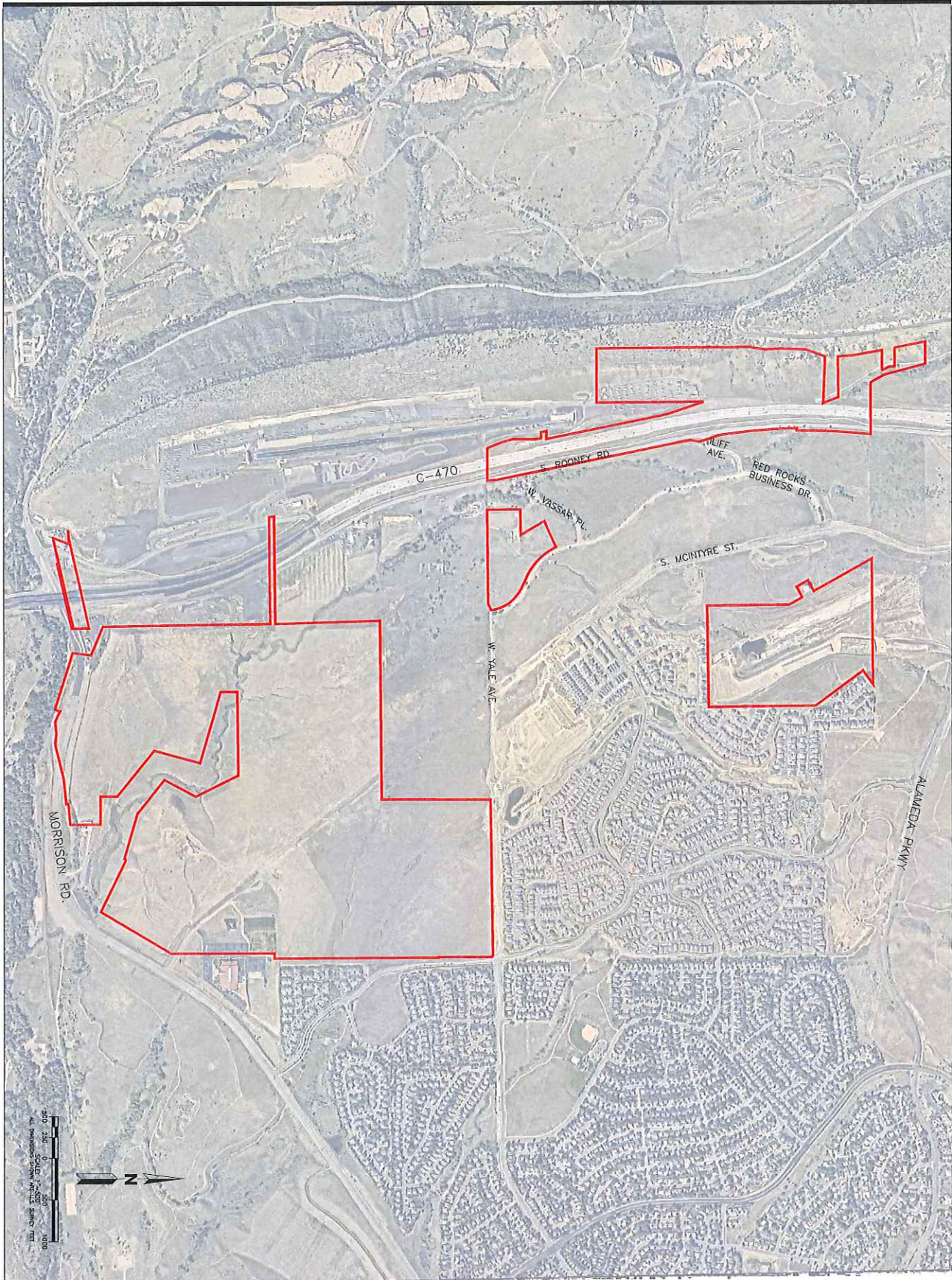
Colorado Revised Statute §32-1-306 requires special districts to provide a current, and accurate map of its boundaries to the Division of Local Government, County Assessor and Clerk and Recorder on or before January 1, of each year. In 2016 the District above has had boundary adjustments, inclusions, or exclusions. An updated map is attached.

Please use the attached updated map for any boundary questions. Should you have further questions or need additional information, please contact the undersigned via email or by telephone at (303) 779-4525.

Sincerely,

Kathy Suazo

District Administrator



Sheet Number:	Job Number	19444.C.01	No.	Issue / Revision	Date	Name
	Project Manager	PBR				
	Design By	PSE				
	Drawn By	TS				
	Principal In Charge	WPW				
	<small>THE DESIGN SHOWN HEREIN INCLUDING ALL TECHNICAL DRAWINGS, DRAWING REPRESENTATION & MODEL THEREOF, ARE PROPRIETARY & CAN NOT BE COPIED, REPRODUCED, OR OTHERWISE DISSEMINATED IN WHOLE OR IN PART WITHOUT THE SOLE AND EXPRESS WRITTEN PERMISSION FROM MARTIN/MARTIN, INC.</small>					

**MOUNT CARBON
 METRO DISTRICT**

BOUNDARY MAP

NOT FOR CONSTRUCTION

MARTIN/MARTIN
 CONSULTING ENGINEERS
 12499 WEST COLFAX AVENUE, LAFAYETTE, COLORADO 80215
 303.431.6100 MARTINMARTIN.COM